

REVISIONS		
REV.	DESCRIPTION	DATE
A	INITIAL RELEASE	2021-05-09

HARDWARE ESTIMATE			
ITEM NO.	TYPE	SIZE	QTY.
16	NUT	10-32, LOW CLEARANCE	4
15	NYLOCK NUT	10-32, LOW CLEARANCE	4
14	WELD NUT	10-32	358
13	LOCK WASH.	10-32	60
12	WASHER	#10 .365-IN OD	82
11	SET SCREW	10-32 X 3/8	20
10	SHCS	M5-0.8 X 16 mm	16
9	SHCS	M5-0.8 X 12 mm	32
8	SHCS	10-32 X 2-1/2	4
6	SHCS	10-32 X 1-1/4	60
4	SHCS	10-32 X 3/4	46
3	SHCS	10-32 X 5/8	76
2	SHCS	10-32 X 1/2	210
1	SHCS	10-32 X 3/8	44

3	Z Axis	1
2	Y Axis	1
1	X Axis	1
ITEM NO.	PART NUMBER	QTY.

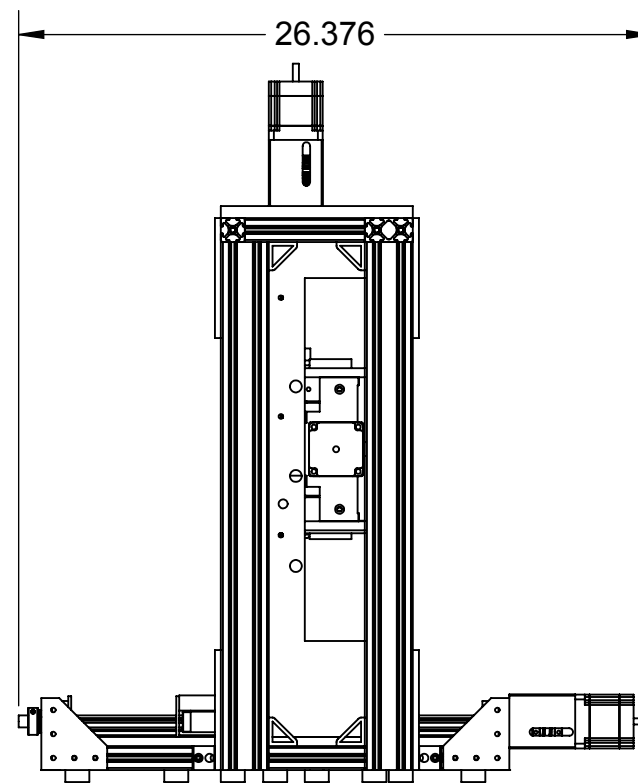
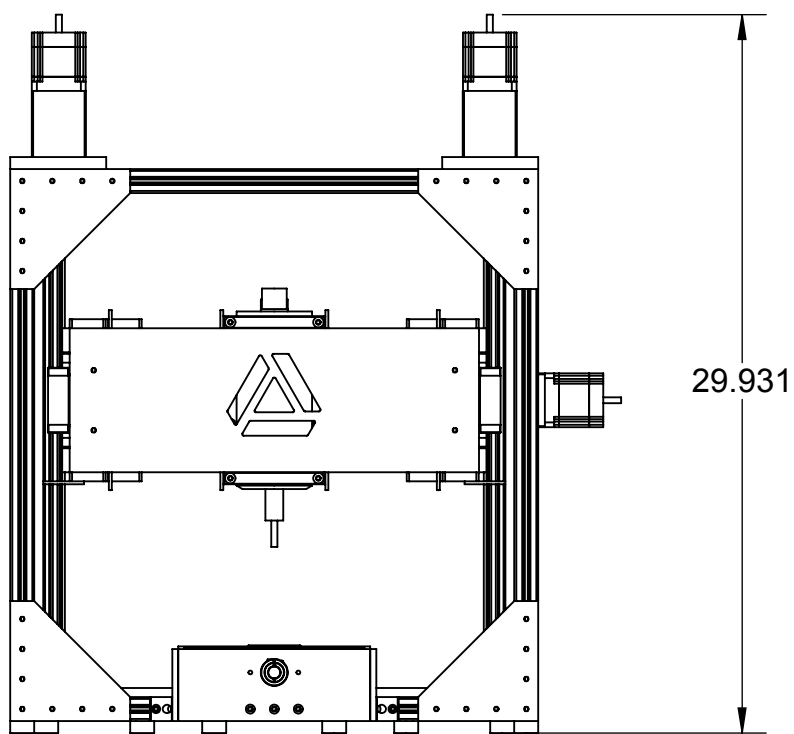
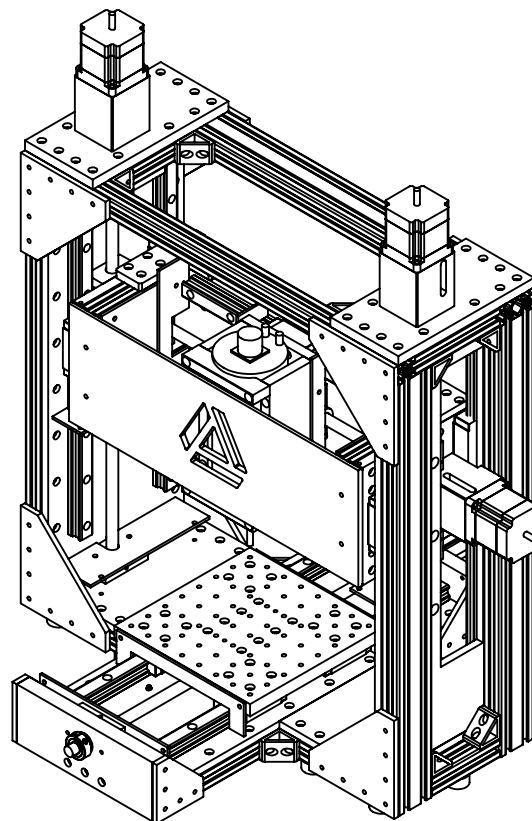
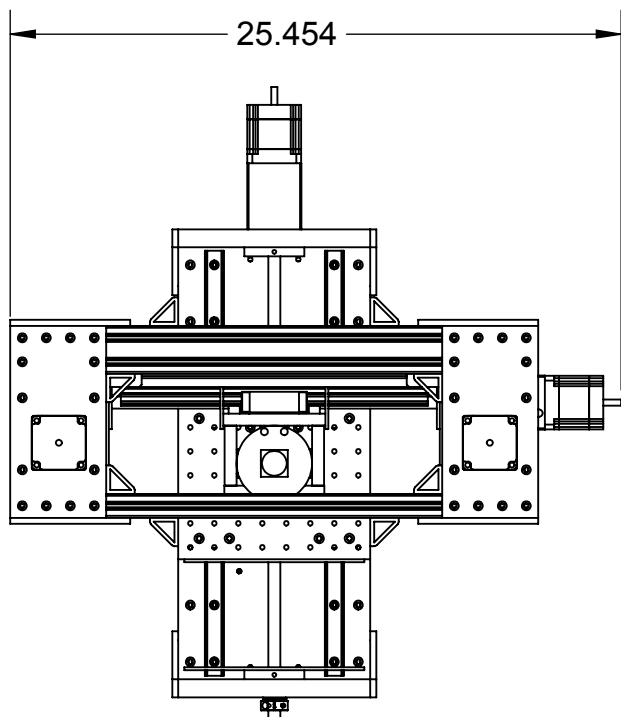
DIMENSIONS IN INCHES [mm]		TOLERANCES (U.O.S.)	
THIRD ANGLE PROJECTION		.X	±.1
		.XX	±.01
		.XXX	±.005
		ANGULAR	± 1°

	TITLE <b>CNC MILL ASSEMBLY</b>	
	DWG. NO. <b>CNC Mill</b>	REV <b>A</b>
LAST UPDATED 2021-05-09	DO NOT SCALE DRAWING	SHEET 1 OF 2

1 2 3 4 5 6 7 8 9 10 11 12 13 14 15 16

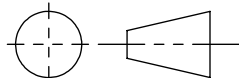
A  
B  
C  
D  
E  
F  
G  
H  
I  
J

NOTES:  
1. ESTIMATED WEIGHT: 125 LBS



DIMENSIONS IN INCHES [mm]

THIRD ANGLE PROJECTION



TOLERANCES (U.O.S.)

.X ±.1  
.XX ±.01  
.XXX ±.005  
ANGULAR ± 1°

VriMech

LAST UPDATED 2021-05-09

TITLE OVERALL DIMENSIONS

DWG. NO. CNC Mill

REV A

DO NOT SCALE DRAWING

SHEET 2 OF 2

1 2 3 4 5 6 7 8 9 10 11 12 13 14 15 16